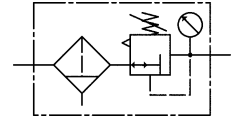




572.14 D



FRES.G12R.1-15B



Stainless steel filter regulators with self-relieving (not for liquid media) containing no non-ferrous metals for use in the food processing, chemical, mining, plant construction and special machinery industries as well as in the medical technology.

Max. input pressure	30 bar
Medium temperature	-20 to 80 °C
Ambient temperature	-20 to 80 °C
Control range	1 – 15 bar
Housing	Stainless steel 1.4404 (AISI 316L)
Sealant	FKM
Diaphragms	PTFE on NBR carrier
Condensate drain	Manual drain valve
Filter rating	50 µm
Flow rate	3000 l/min
Flow rate measurement	at $P_1 = 8$ bar, $P_2 = 6$ bar and pressure drop $\Delta p = 1$ bar

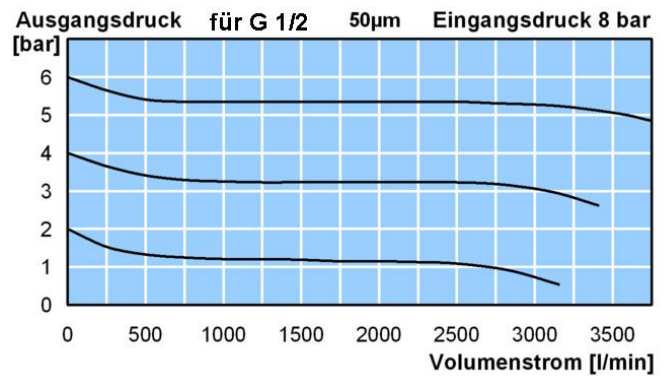
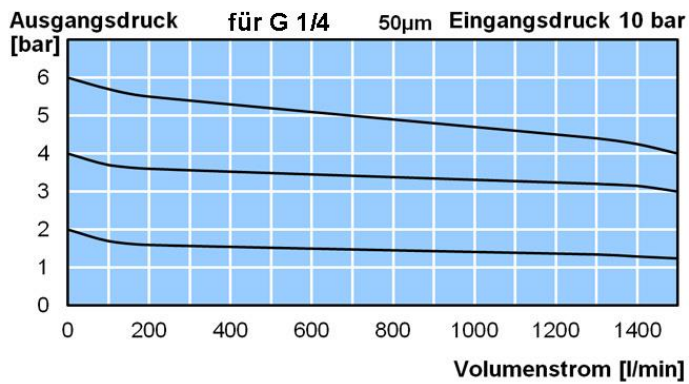
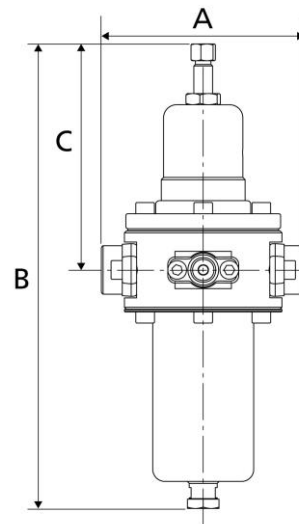
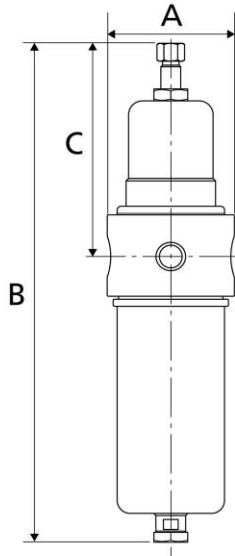
Reversible, stainless steel pressure regulator with self-relieving design, manual drain valve and stainless steel pressure gauge

Art. No.	Type No.	Thread	Flow rate l/min	A mm	B mm	C mm
101207	572.14 D	G 1/4	800	64.0	249.0	121.0
129274	FRES.G12R.1-15B	G 1/2	3000	109.0	246.0	121.0

- With NPT Thread available on request
- Other control ranges, temperature ranges and FDA-approval available on request
- With filter element 5 µm available on request
- Without selv-relieving design (for liquids) available on request
- With semi- or fully automatic drain valve on request

- Any liability is excluded in case of use of harmful and explosive media

Dimensions:



Accessories / spare parts

Art. No.	Type No.	Description
101199	576/1	Mounting bracket with nut M45x1.5
101200	576/3	Mounting bracket with nut M50x1.5
101201	4084	Pressure gauge Ø 63 mm, G 1/4 ET, 0 – 10 bar
101202	4085	Pressure gauge Ø 63 mm, G 1/4 ET, 0 – 16 bar
101209	22.57244.4	Set of wearing parts for G 1/4
129673	VTSFRES.G12.RÜ	Wear part set for G 1/2